

Roxette - Go To Sleep

Tom: F

F F F F Gm Gm F
 Baby! Before you go to sleep Baby!
 C C C
 There's a shadow on the terrace
 Am a snow dance for the living.
 Dm Dm C
 There's heavy weather on the way
 C
 I heard it on the news.
 C C Am Am
 And life's a tough principal who won't reward the losers
 Dm Dm C
 Your name is on the tea-cup,
 C NC
 There's nothing I can do There's nothing I can do

REFRÃO:

F F Bb
 But to wish you'd think about me before you go to sleep
 Am Gm Gm F F
 and I wish you the best there is before you go to sleep
 C C
 There are tears without the colour,

Am Am
 a million seas without water
 Dm Dm C
 an ocean full of people
 C
 where shattered hearts can go.
 C C Am Am
 And love's a golden ripple where answers are so simplee
 Dm Dm C C
 But the explanations are very hard to do, are very hard to do
 NC
 Are very hard to do

REFRÃO:

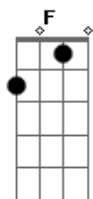
NC F F Bb
 And I wish you'd think about me before you go to sleep
 Am Gm Gm F
 and I wish you the best there is before you go to sleep

(REPETE REFRÃO)

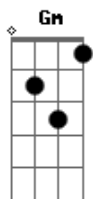
Gm Gm F F Gm
 Before you go to sleep Baby! Before you go to sleep
 Gm F F Gm F
 Baby! Before you go to sleep Go to sleep Baby!

NC = No chord

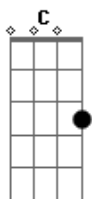
Acordes



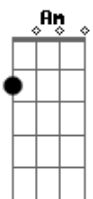
© ukulele-chords.com



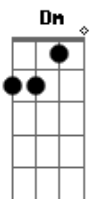
© ukulele-chords.com



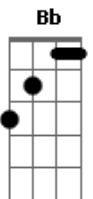
© ukulele-chords.com



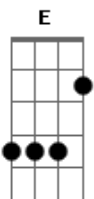
© ukulele-chords.com



© ukulele-chords.com



© ukulele-chords.com



© ukulele-chords.com