

Russ Taff - Let It Flow

Tom: Db

m ^E
 Touch my heart, when I cannot feel you ^{Am}
^E ^A ^B
 Touch my eyes, when I cannot see
^E ^A ^B ^E
 Fill my soul 'til my cup overflows
^{Am}
 With goodness and mercy
^E ^{Am}
 Touch my ears when I will not hear you
^{Dbm} ^A ^B
 Change my mind when I won't believe
^E ^A ^{Gbm} ^B ^E
 Fill my soul 'til my cup overflows

^{Am} ^E
 As I kneel before your throne
^{Am} ^E
 Anoint my head with oil

^{Gbm}
 Let it flow, let it flow
^E ^A ^E ^A ^B ^A
 Holy Spirit of God, cover me
^{Gbm}
 Let it flow, let it flow
^E ^A ^E ^A ^B ^A
 Holy Spirit of God, cover me

(^E ^A ^B ^A)

^E ^{Am}
 Touch our hearts, when we cannot feel you
^E ^A ^B
 Touch our eyes, when we cannot see
^E ^A ^B ^E
 Fill our souls 'til our lives overflow
^{Am}
 With goodness and mercy
^E ^{Am}
 Touch our ears when we will not hear you
^{Dbm} ^A ^B
 Change our minds when we won't believe
^E ^A ^{Gbm} ^B ^E
 Teach us how to trust you, heal us now

^{Am} ^E
 As we kneel before your throne
^{Am} ^E
 Anoint our heads with oil

^{Gbm}
 Let it flow, let it flow
^E ^A ^E ^A ^B ^A
 Holy Spirit of God, cover me

^{Gbm}
 Let it flow, let it flow
^E ^A ^E ^A ^B ^A
 Holy Spirit of God, make us worthy of your love
^{Gbm}
 Let it flow, let it flow
^E ^A ^E ^A ^B ^A
 Holy Spirit of God, cover us
^E ^A ^B ^A
 Cover us

^G ^A ^E
 Oh fill us with your healing power
^G ^A ^E
 Living water, wind and fire
^B
 Let it flow

^{Gbm}
 Let it flow, let it flow
^E ^A ^E ^A ^B ^A
 Holy Spirit of God, cover us
^{Gbm}
 Let it flow, let it flow
^E ^A ^E ^A ^B ^A
 Holy Spirit of God, make us worthy of your love
^{Gbm}
 Let it flow, let it flow
^E ^A ^E ^A ^B ^A
 Holy Spirit of God, make us new
^{Gbm}
 Let it flow, let it flow
^E ^A ^E ^A ^B ^A
 Holy Spirit, we want to be closer, Lord, to you

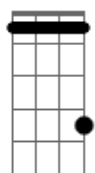
^{Gbm}
 Let it flow
^E ^A ^E ^A ^B ^A
 cover me, cover us
^{Gbm}
 Let it flow,
^E ^A ^E ^A ^B ^A
 let it flow
^{Gbm}
 Holy Spirit,
^E ^A ^E ^A ^B ^A
 Holy Spirit, let it flow

^{Gbm}
 Holy Spirit
^E ^A ^E ^A ^B ^A
 closer to me, let it flow

^E ^A ^E ^A ^B ^A
 We want to be closer, Lord, to you
^E
 Please, cover us

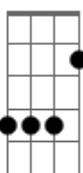
Acordes

Db



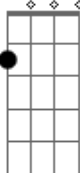
© ukulele-chords.com

E



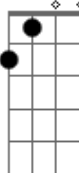
© ukulele-chords.com

Am



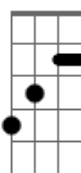
© ukulele-chords.com

A



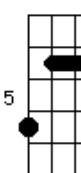
© ukulele-chords.com

B



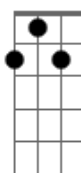
© ukulele-chords.com

Dbm



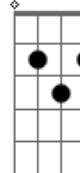
© ukulele-chords.com

Gbm



© ukulele-chords.com

G



© ukulele-chords.com