

Seether - Waste

Tom: D

Intro:

2x

D G D
No one noticed, let the freedom wash away.
D G D
Losing focus, the pretense is second nature.
D G D
It's a broken life that I cling too,
D G
Trying to make right.
Intro: para o refrão:

B G Bb B G
I feel dismayed, just like you do.
G Bb
I feel decayed..

(Refrão)

D G D G
So find me a way, to leave this wasted life behind me.
(this wasted life)
D G D G
So find me a way, to leave this wasted life behind me
D
after all.

Yes, I see you surrounded by the hopeless.
When they need you you're much to good and bloated,
By the hopeless life that you cling too.
Trying to make right.
Intro: para o refrão:

B G Bb B G
I feel dismayed, just like you do.
G Bb
I feel decayed..

(Refrão)

D G D G
So find me a way, to leave this wasted life behind me.
(this wasted life)
D G D G
So find me a way, to leave this wasted life behind me
G B G Bb
after all.

B G Bb B G Bb
Go away.. Go away..

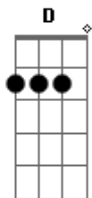
And just leave me here.. Just leave me here.. Just
leave me here..

(Refrão)

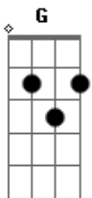
D G D G
So find me a way, to leave this wasted life behind me.
(this wasted life)
D G D G
So find me a way, to leave this wasted life behind me
G D
This wasted life..
D G
This wasted life..
G D
This wasted life..

D

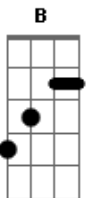
Acordes



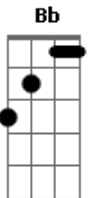
© ukulele-chords.com



© ukulele-chords.com



© ukulele-chords.com



© ukulele-chords.com