

Seventeen Sunsets - Jigsaw

tom:

Cm

Eb
It's been going for long now

You walk into the room
Eb
Like it could be my way out
Cm
I'm a sucker for your style

And everything you do
Ab
Feels like everything I'm not

Eb
?Cause I could spend the night trying to figure you out
Eb
But there's a puzzle piece missing with the shape of my heart
Cm
I could try to forget you, but there's something I like
Ab
In the way I get lost when I see your smile

Eb **Fm**
Falling down
Ab **B**
We're falling out now

Eb
You are the jigsaw

I've been falling everyday
Eb
You're shining technicolor

And I'm feeling so grey
Ab
Even though I try it

I just can't walk away
Ab
If you're the jigsaw, baby

I want to play your game

Eb
You are the jigsaw

I've been falling everyday
Eb
You're shining technicolor

And I'm feeling so grey
Ab
Even though I try it

I just can't walk away
Ab
If you're the jigsaw, baby

I want to play your game

Eb
You are the jigsaw (jigsaw!)

Eb
You are the jigsaw (jigsaw!)

Eb
You are the jigsaw

I've been falling everyday
Eb
You're shining technicolor

And I'm feeling so grey
Ab
Even though I try it

I just can't walk away
Ab
If you're the jigsaw, baby

I want to play your game

Eb
It's getting darker to pretend that everything's alright
Eb
When all my friends say I could never ever be your type
Cm
But being close to you is all I need to pick a fight
Ab
Guess I got a thing for making everything look hard

Eb
I am one step closer to a big mistake
Eb
?Cause your face is tattooed all over my brain
Cm

It's a nerve-wracking feeling that I'm fighting again
Ab
But I know deep down that you feel the same

Eb **Fm**
Running out
Ab **B**
Maybe not now
Eb **Fm**
Falling down
Ab **B**
No regrets now

Eb
You are the jigsaw

I've been falling everyday
Eb
You're shining technicolor

And I'm feeling so grey
Ab
Even though I try it

I just can't walk away
Ab
If you're the jigsaw, baby

I want to play your game

Eb
You are the jigsaw

I've been falling everyday
Eb
You're shining technicolor

And I'm feeling so grey
Ab
Even though I try it

I just can't walk away
Ab
If you're the jigsaw, baby

I want to play your game

G F Ab G
Woah woah

(**G F Ab G Eb**)

G F Ab G
Woah woah

(**G F Ab G Eb**)

Eb
You are the jigsaw (jigsaw!)

Eb
You are the jigsaw (jigsaw!)

Eb
You are the jigsaw

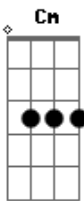
I've been falling everyday
Eb
You're shining technicolor

And I'm feeling so grey
Ab
Even though I try it

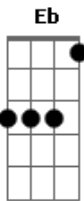
I just can't walk away
Ab
If you're the jigsaw, baby

I want to play your game

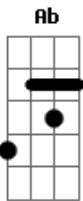
Acordes



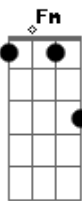
© ukulele-chords.com



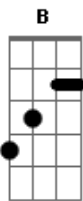
© ukulele-chords.com



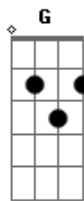
© ukulele-chords.com



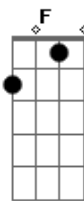
© ukulele-chords.com



© ukulele-chords.com



© ukulele-chords.com



© ukulele-chords.com