

Slipknot - Mate Feed Kill Repeat

Tom: **C**

RIFF **A** (2:10)

P.M. - - - - -

P.M. - - - - -

P.M. - - - - -

FILL **A** (2:53)

COUNT|4---|
D|----|
A|----|
F|----|
C|----|
G|3\2-|
C|3\2-|

P.M. - - - - -

RIFF **E** (3:08)

P.M. - - - - -

Then play RIFF **D** x2 and after that repeat the combination of those two riffs(RIFF **E** x2,RIFF **D** x2) once more.This combination is COMBO **A** .

P.M. - - - - -

Then play FILL **A** (3:30).

Then play RIFF **D** x8(3:30),COMBO **A** (3:45),RIFF **F** x2(3:59),RIFF **G** x2(4:02).

FILL **B** (4:07)

COUNT|4---|
D|----|
A|----|
F|----|
C|----|
G|--1-|
C|--1-|

RIFF **H** (4:08)

P.M. - - - - -

RIFF **I** (4:22)

Then play RIFF **H** x2(4:29).

RIFFS **K** & **L** are played in the same time.When RIFF **K** is played twice by Guitar 1, RIFF **L** is played once by Guitar 2.

GUITAR 1
RIFF **K** (4:36)

GUITAR 2
RIFF **L** (4:36)

RIFFS **M** & **N** are played at the same time.

GUITAR 1
RIFF **M** (5:05)

P.M. - - - - -

GUITAR 2
RIFF **N** (5:05)

P.M. - - - - -

Then keep playing RIFF **M** on GUITAR 1 for 2 more times but in GUITAR 2 play RIFF **P**:

GUITAR 2

RIFF **P** (5:12)

P.M. - - - - -

RIFF **Q** (5:19)

P.M. - - - - -

RIFF **R** (5:33)

Then play RIFF **Q** x4(5:47)

RIFF **S** (6:01)

P.M. - - - - -

Then on GUITAR 1 play RIFF **R** x4(6:14) while playing RIFF **L** x1(6:14) on GUITAR 2.
End the song by playing RIFF **R** x4 on GUITAR 1 while leaving GUITAR 2 open.

Gently (MFKR version)

RIFF **A** (0:00) (clean)

Then (1:21) hit C-F-**C** open and let them ring while turning distortion on.

RIFF **E** (2:00)

COUNT|1---2---3---4---|1---2---3---4---|1---2---3---4---|1---2---3---4---|
D|-----| \
A|-----| \
F|-----| \
C|0-----0-----|8-----8-----|8p7-----7-----7-|
G|0-----0-----|8-----8-----|8p7-----7-----7-|
C|0---0-0-0-0-0-0-|8-8-8-8-8-8-8-8-|8p7-7-7-7-7-7-7-|
|7-7-7-7-7-7-7-0| |
P.M. - - - - -

|Guitar 12 x 2
COUNT|1---2---3---4---|1---2---3---4---|1---2---3---4---|1---2---3---4---|
D|-----| /
A|-----| /
F|-----|4-----5-----|
C|1-----1-----|-----7-----|
G|1-----1-----|2-----3-----|5-4-7-----|7p6---|
C|1-1-1-1-1-1-1-1-|-----|5-4-7-----|
-4h5--1~---| /
P.M. - - - - -

Now (2:28), I hope you can make out what the two guitars are playing,
it's really easy, and I'm too bored to write it down.

Then (3:15) play RIFF **E** x 2

Do Nothing/ Bitchslap

Smooth Jazz Part
~~~~~

Riff 5

Confessions

Second Riff in Heavy Part  
~~~~~

Riff 1

Funk Part
~~~~~

Riff2

Other Riff of Funk Part  
~~~~~

chorus starts here

Only One

Chorus
solo:

Riff 1

Riff 2

Riff 3

Riff 4

Riff 5

- - - - - |palm muting

Riff 6

- - - - - |palm muting

(I'm not sure here, it's played very fast!!!!)

Riff 7

- - - - - |palm muting

(After the solo, play this!)

Riff 8

Riff 3 End of the song!!!!!!!

Tattered and Torn

Killers are Quiet

Riff 1

Riff 1

Riff 2

Hold note using a whammy pedal. Throughout the next 3 measures.
Listen to the cd, I have no idea how to tab it.

Riff 2

Riff 3

Riff 3a

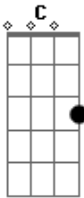
Riff 3b

Very gradually slide down.

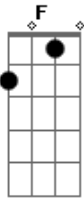
Riff 4 (Bass Transcribed for Guitar)

Riff 4

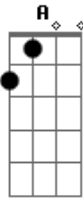
Acordes



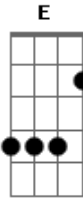
© ukulele-chords.com



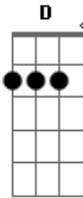
© ukulele-chords.com



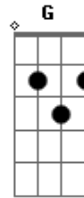
© ukulele-chords.com



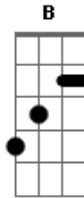
© ukulele-chords.com



© ukulele-chords.com



© ukulele-chords.com



© ukulele-chords.com