

Smash Mouth - Padrino

Tom: **C**

Intro: For the intro, I suggest either finger-picking this or using the thinnest pick you can find.

Cm - **Db** - **G** - **Cm**.(played ska style)

Chorus: (played barred except **Cm**)
Hi **Fm** - **Gm** - **Cm** E---1-----

Lo **Fm** - **Cm** - **Gm** E-3-4-3-1-----

Then play this 3x:
The **Fm** Riff:

Barre chords: **C** - **Bb** - **Ab** - **G** - **Cm**(ska)

Solo:

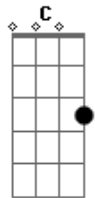
Then:

Next:

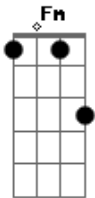
Other part: "Stay outta the papers. . . "
Fm - **Abm** - **Bm** - **Cm** **G** **Cm** **G** **Cm**

Verse: **Cm** until lyrics start, then it's just

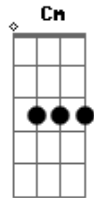
Acordes



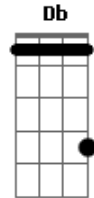
© ukulele-chords.com



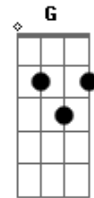
© ukulele-chords.com



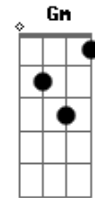
© ukulele-chords.com



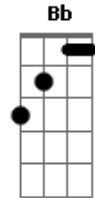
© ukulele-chords.com



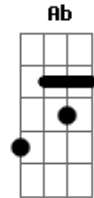
© ukulele-chords.com



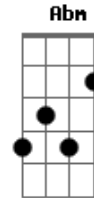
© ukulele-chords.com



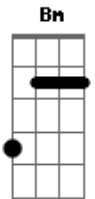
© ukulele-chords.com



© ukulele-chords.com



© ukulele-chords.com



© ukulele-chords.com