

Staind - Outside

tom:

Db (forma dos acordes no tom de D)

Afinação: Eb Ab Db Gb Bb Eb

?[Intro] E D G A

And you bring me to my knees again

All the times when I could beg you please, in vein

All the times when I felt insecure for you

And I leave my burdens at the door

But I'm on the outside - I'm lookin' in

I can see through you - see your true colors

Cause inside you're ugly - ugly like me

I can see through you - see to the real you

(E D G A)

And all the times I felt like this won't end, it's for you

And I taste what I could never have, it was from you

All the times that I cried, my intentions full of pride

And I waste more time than anyone

But I'm on the outside - I'm lookin' in

I can see through you - see your true colors

Cause inside you're ugly - ugly like me

I can see through you - see to the real you

(E D G A)

And all the times that I've cried, all this wasted, it's all inside

And I feel all this pain, I stomped it down, it's back again

And I lie here in bed, all alone, I can't mend

And I feel tomorrow will be okay

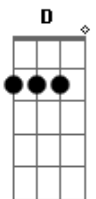
But I'm on the outside - I'm lookin' in

I can see through you - see your true colors

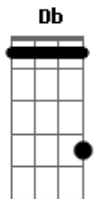
Cause inside you're ugly - ugly like me

I can see through you - see to the real you

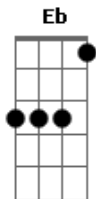
Acordes



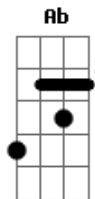
© ukulele-chords.com



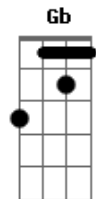
© ukulele-chords.com



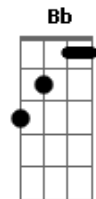
© ukulele-chords.com



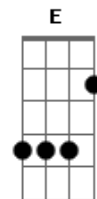
© ukulele-chords.com



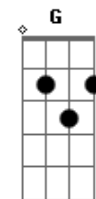
© ukulele-chords.com



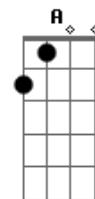
© ukulele-chords.com



© ukulele-chords.com



© ukulele-chords.com



© ukulele-chords.com