

Symphony X - Without You

tom:
Intro: Em D Em D
Em D G A

Em D Em
Flying into the storm
D Em D G A
Hanging on a broken wing
Em D Em
Onto every life
D Em D G A
A little rain must fall
Em D
Oh, the words I sing
Em D
It's a greater thing
Em D G A
To have loved and lost
Em D Em D
Than to never, ever
Em D G A
Loved at all

C Em
I've come undone
D
Oh, any fool can see
A B
What's become of me

C Em
Sometimes I feel
D
Feels like there's nothing there
A B
Just an empty stare
C Em
Sometimes I feel
D
Feels like with each passing day
A
Life just slips away
Bbm
Without you

(B A B A)
(B A G A)

B A B
Drifting on the sea
A B A G A
A lonely ship without a sail
B A B
Sinking like a stone
A B A G A
Drowning in despair
Em D
Fighting tooth and nail
Em D
Mind the siren's wail
Em D C D
And here comes the night
Em D Em D
But the moment's gone without a warning
Em D G A

Or without a prayer

C Em
I've come undone
D
Oh, fearing things unseen
A B
Can I mend this broken dream?

C Em
Sometimes I feel
D
Feels like there's nothing there
A B
Just an empty stare
C Em
Sometimes I feel
D
Feels like with each passing day
A
Life just slips away
Bbm
Without you

[Solo] B A B A
B A G A
B A B A
B A G A
Dm C Dm C
Dm C Bb C
Dm C Dm C
Dm C Bb C

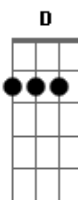
(Dm C Dm C)

D C F
The days slowly disappear
G D C F G
Ooh Time to face my fears
D Dm C
What will be will be, oh
Dm
I can't escape
G
I can't escape my
B
My destiny

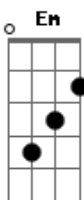
(Em D Em D)
(Em D G A)

C Em
Sometimes I feel
D
Feels like there's nothing there
A B
Just an empty stare
C Em
Sometimes I feel
D
Feels like with each passing day
A B
Life just slips away
C Em
Sometimes I feel
D
Feels like there's nothing there

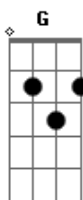
Acordes



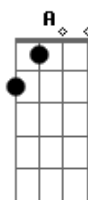
© ukulele-chords.com



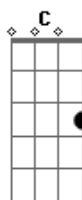
© ukulele-chords.com



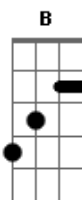
© ukulele-chords.com



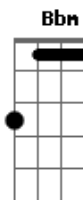
© ukulele-chords.com



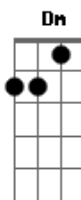
© ukulele-chords.com



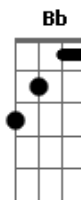
© ukulele-chords.com



© ukulele-chords.com



© ukulele-chords.com



© ukulele-chords.com

