

Taylor Swift - White Horse

tom:
Intro: C F Am F
C F Am F

[Primeira Parte]

C
Say you're sorry
F
That face of an angel
Am
Comes out just when you need it to
C F
As I paced back and forth all this time
Am F
'Cause I honestly believed in you

[Pré-Refrão]

Am F
Holding on, the days drag on
G
Stupid girl, I should've known, I should've known

[Refrão]

C
That I'm not a princess
Am
This ain't a fairytale
F
I'm not the one you'll sweep off her feet
G
Lead her up the stairwell

C
This ain't Hollywood
Am
This is a small town
F G
I was a dreamer before you went and let me down
Am G F
Now it's too late for you and your white horse
C
To come around
(F Am F)

[Segunda Parte]

C
Maybe I was naive
F
Got lost in your eyes
Am F
And never really had a chance

(Never really had a chance)

C
My mistake
F
I didn't know to be in love
Am F
You had to fight to have the upper hand
(Fight to have the upper hand)

[Pré-Refrão]

Am F
I had so many dreams, about you and me
G
Happy endings, now I know

[Refrão]

C
I'm not a princess

Am
This ain't a fairytale
F
I'm not the one you'll sweep off her feet
G
Lead her up the stairwell

C
This ain't Hollywood
Am
This is a small town
F G
I was a dreamer before you went and let me down
Am G F
Now it's too late for you and your white horse
C
To come around
(Am F G)

[White Horse Ponte]

Am G F
And there you are on your knees
C G F
Begging for forgiveness, begging for me
C G F Bb
Just like I always wanted, but I'm so sorry
Bb
I'm so sorry

[Coney Island Ponte]

Am F
Were you waiting at our old spot
C
In the tree line, by the gold clock?
Did I leave you hanging every single day?
Em F
Were you standing in the hallway
G
With a big cake, happy birthday?
Did I paint your bluest skies the darkest grey?
Am
A universe away
F
And when I got into the accident
C
The sight that flashed before me was your face
Em F
But when I walked up to the podium
G
I think that I forgot to say your name

[Refrão]

Am F
I'm sitting on a bench in Coney Island
C
Wonderin' "where did my baby go?"
Em
The fast times, the bright lights, the merry go
F G
Sorry for not making you my centerfold

[Pós-Refrão]

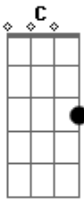
Am
Over and over
F
Lost again with no surprises
C
Dissappointments, close your eyes
Em F
And it gets colder and colder
G
When the sun goes down

[Final]

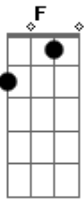
When the sun goes down
It's too late to catch me now

When the sun goes down
It's too late for you and your white horse
It's too late for you and your white horse
To catch me now

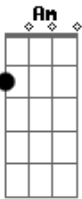
Acordes



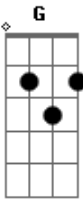
© ukulele-chords.com



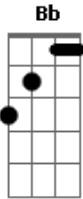
© ukulele-chords.com



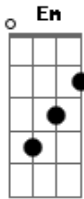
© ukulele-chords.com



© ukulele-chords.com



© ukulele-chords.com



© ukulele-chords.com