



The Beatles - Let It Be

Tom: C (parte 1) (parte 2)

(intro) (parte 3)

(parte 4)

When I find myself in times of trouble (parte 5)

Mother Mary comes to me

Speaking words of wisdom, let it be (parte 6)

(parte 7)

And in my hour of darkness

She is standing right in front of me (parte 8)

Speaking words of wisdom, let it be

Let it be, let it be, let it be, let it be

Whisper words of wisdom, let it be.

And when the broken-hearted people

Living in the world agree

There will be an answer, let it be

For though they may be parted

There is still a chance that they will see

There will be an answer, let it be

Let it be, let it be, let it be, let it be

There will be an answer, let it be

Let it be, let it be, let it be, let it be

Whisper words of wisdom, let it be.

(instrumental 2x) F Em F C Bb Am G F C

(solo 2x) C G Am F C G F Em F C

Let it be, let it be, let it be, let it be

Whisper words of wisdom, let it be.

And when the night is cloudy

There is still a light that shines on me

Shine until tomorrow, let it be

I wake up to the sound of music

Mother Mary comes to me

Speaking words of wisdom, let it be

Let it be, let it be, let it be, let it be

There will be an answer, let it be

Let it be, let it be, let it be, let it be

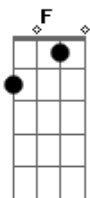
Whisper words of wisdom, let it be.

(F Em F C Bb Am G F C)

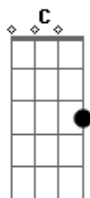
(passagem instrumental)

(Em)

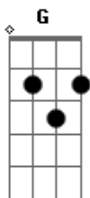
Acordes



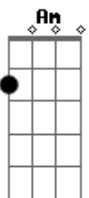
© ukulele-chords.com



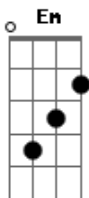
© ukulele-chords.com



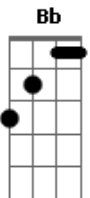
© ukulele-chords.com



© ukulele-chords.com



© ukulele-chords.com



© ukulele-chords.com