

# The Wallflowers - One Headlight

Tom: D

Intro: G D Gb Bm (2x)

G D  
So long ago I don't remember when  
G Bm  
That's when they say I lost my only friend  
G D  
Well they said she died easy of a broken heart disease  
Gb Bm G D Gb Bm  
As I listen through the cemetery trees  
G D  
I seen the sun comin' up at the funeral at dawn  
Gb Bm  
of long broken arm of human law  
G D  
Now it always seem such a way she always had a pretty face  
Gb Bm G  
I wondered when she hung around this place  
Gb  
Hey, hey, heeey...

Refrão:

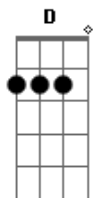
G  
Come on try a little  
D  
Nothin' is forever  
Em A  
There's gotta be somethin' better than in the middle  
G D  
Me an Cinderella, put it all together  
Em  
We can drive it home  
A G D Gb Bm  
With one headlight  
G D  
She said it's cold it feels like Independence Day  
Gb Bm

And I can't break away from this parade  
G D  
But there's got to be an opening somewhere here in front of me  
Gb Bm  
Through this maze of ugliness and greed  
G D  
I seen the sign up ahead at the county line bridge  
Gb Bm  
Saying all is good and nothing less it's dead  
G D  
Running till she's out of breath she ran until there's nothing left  
Gb Bm  
She hit the end it's her window ledge  
G Gb  
Hey Hey Heeey

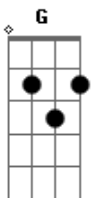
Refrão:

G D  
This place is old feels just like a beat up truck  
Gb Bm  
I turn the engine but engine doesn't turn  
G D  
With smells of cheap old wine and cigarettes this place is always such a mess  
Gb Bm  
Sometimes I think I'd like to watch it burn  
G D  
So alone I feel just like somebody else  
Gb Bm  
Man I ain't changed but I know I ain't the same  
G D  
But somewhere fere in between these city walls are dyin' dreams  
Gb Bm  
I think her death it must be killing me  
G Gb  
Hey Hey Heeey  
(Refrão)

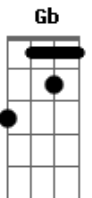
## Acordes



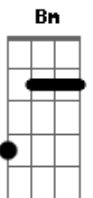
© ukulele-chords.com



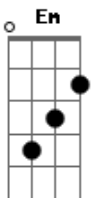
© ukulele-chords.com



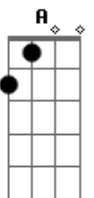
© ukulele-chords.com



© ukulele-chords.com



© ukulele-chords.com



© ukulele-chords.com