

The Weeknd - After Hours

tom:

Intro: Cm Cm

[Primeira Parte]

Cm Thought I almost died in my Gm dream again (Baby, almost Cm died) Fm
Fightin' for my life, I couldn't breathe again
I'm fallin'?into new (Oh, oh)
Without you goin'?smooth (Fallin' in)
'Cause my heart belongs to you
I'll risk it all for you
I won't just leave
This time, I'll never leave
I wanna share babies
Protection, we won't need
Your body next to me
Is just a memory
I'm fallin' in too deep, oh
Without you, I'm asleep
It's on me, only me, oh
Talk to me, without you, I can't breathe
(Cm Gm Fm Cm Gm Fm)
(Cm Gm Fm Cm Gm Fm)

[Segunda Parte]

Cm My darkest hours
Girl, I felt so alone inside of this Gm crowded room
Fm Different girls on the floor, distractin' my thoughts of you
I turned into the man I used to be, to be
Cm Put myself asleep
Just so I can get closer to you inside my dreams
Fm Didn't wanna wake up 'less you were beside me
Gm I just wanted to call you and say, and say
Fm

[Refrão]

Cm Oh, baby
Where are you now when I need you most?
Fm I'd give it all just to hold you close
Gm Sorry that I broke your heart, your heart
Fm I said, baby
I'll treat you better than I did before
Fm I'll hold you down and not let you go
Gm This time, I won't break your heart, your heart, yeah
Fm

(Cm Gm Fm)

[Ponte]

Cm I know it's all my Gm fault
Fm Made you put down your guard
Gm I know I made you fall
I said you were wrong for me
Cm I lied to you, I lied to you, I lied to you (To you)
Gm Can't hide the truth, I stayed with her in spite of you
Bb You did some things that you regret, still right for you
Ab 'Cause this house is not a home

[Refrão]

Cm W, baby
Gm Where are you now when I need you most?
Fm I'd give it all just to hold you close
Gm Sorry that I broke your heart, your heart
Cm I said, baby
Gm I'll treat you better than I did before
Fm I'll hold you down and not let you go
Gm This time, I won't break your heart, your heart, yeah
Fm

Cm Without my baby
Gm Where are you now when I need you most?
Fm I gave it all just to hold you close
Cm Sorry that I broke your heart, your heart
G7 Cm

And I said, baby
I'll treat you better than I did before

Gm

I'll hold you down and not let you go
This time, I won't break your heart, your heart, no

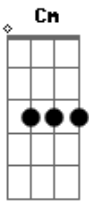
Fm

Cm

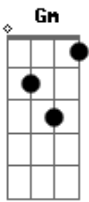
G7

Cm

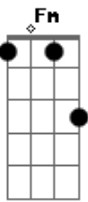
Acordes



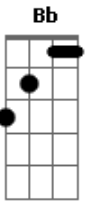
© ukulele-chords.com



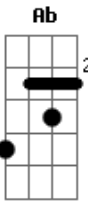
© ukulele-chords.com



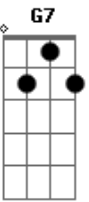
© ukulele-chords.com



© ukulele-chords.com



© ukulele-chords.com



© ukulele-chords.com