

The White Stripes - Now mary

Tom: **D**
Intro: **G**

G **Bb** **F** **Bb** **G**
Now Mary can't you find a way to bring me down
G **Bb** **F** **Bb** **G**
I'm so sorry that I have to go and let you down

INTERLUDE **E**

REFRÃO
C **G** **F** **G**
Knowing you i'll think things are gonna be fine
A **D**
But then again you'll probably change your mind

SOLO

G **Bb** **F**
I'm sorry Mary but being your mate means trying to find
Bb **G**
Something that you aren't going to hate
G **Bb** **F** **Bb** **G**
What a season to be beautiful without a reason

(Aqui fica um pouco mais rápido)

INTERLUDE **E**

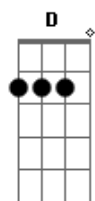
REFRÃO

SOLO

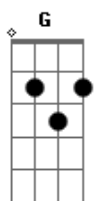
REFRÃO

Agora repete a intro e depois acaba em G.

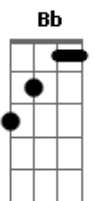
Acordes



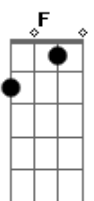
© ukulele-chords.com



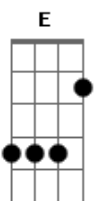
© ukulele-chords.com



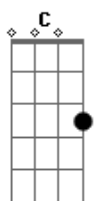
© ukulele-chords.com



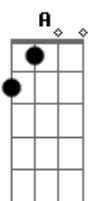
© ukulele-chords.com



© ukulele-chords.com



© ukulele-chords.com



© ukulele-chords.com