

TIAKO - THE BEHOLDER

tom:
Am (forma dos acordes no tom de Bbm)
Afinação: Eb Ab Db Gb Bb Eb

(You're just a little bit older)
(You're the painting, I'm the beholder)
(I wanna feel you, yeah)
(I wanna feel)

Think I have a chance
I think that I'll try my best
'Cause you always caught my attention
You're my type, you're perfection
Don't wanna be your friend
I don't have to pretend
'Cause I think it's too clear
I think you know it clear

Many times, I've been heartbroken
Due to my illusions
Due to some confusion
But now, thanks to your signs
I know I have a chance
I know I have a chance
(Haha, yeah)

Let me make you mine
Let me make you realize
I'm everything you could need
I can adjust to your speed
You're just a little bit older
You're the painting, I'm the beholder
I wanna feel you, yeah
I wanna feel you

Seeing you everyday
Missing you all those days
When I can't see your face
When I don't hear your name
So it comes out my mouth
Cause I always need to shout
How much I'm in love with you
How much I wanna fuck you

Many times, I've been heartbroken
Due to my illusions
Due to some confusion
But now, thanks to your signs
I know I have a chance
I know I have a chance

Let me make you mine
Let me make you realize
I'm everything you could need
I can adjust to your speed
You're just a little bit older
You're the painting, I'm the beholder
I wanna feel you, yeah
I wanna feel you

I'm feeling your presence
And I'm not with you
What do we still pretend?
There's something between us
That nobody could ever understand
I'm feeling your presence
And I'm not with you
What do we still pretend?
There's something between us
That nobody could ever understand

(You're just a little bit older)
(You're the painting, I'm the beholder)
(I wanna feel you, yeah)
(I wanna feel)
(You're just a little bit older)
(You're the painting, I'm the beholder)
(I wanna feel you, yeah)
(I wanna feel)

Let me make you mine
Let me make you realize
I'm everything you could need
I can adjust to your speed
You're just a little bit older
You're the painting, I'm the beholder

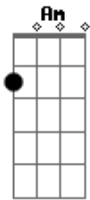
I wanna feel you, yeah
I wanna feel you

I'm feeling your presence
And I'm not with you
What do we still pretend?
There's something between us
That nobody could ever understand
I'm feeling your presence
And I'm not with you

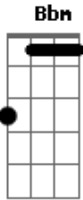
What do we still pretend?
There's something between us
That nobody could ever understand
Yeah
(I wanna feel you)

(Yeah, I wanna feel you)
Ah, ah-ah
I'm feeling your presence
And I'm not with you
What do we still pretend?
There's something between us
That nobody could ever understand
I'm feeling your presence
And I'm not with you
What do we still pretend?
There's something between us
That nobody could ever understand
Yeah, yeah-yeah
Yeah

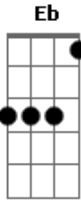
Acordes



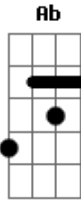
© ukulele-chords.com



© ukulele-chords.com



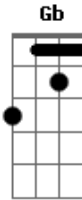
© ukulele-chords.com



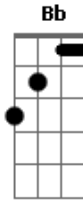
© ukulele-chords.com



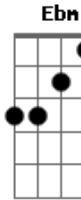
© ukulele-chords.com



© ukulele-chords.com



© ukulele-chords.com



© ukulele-chords.com