

Tópaz - O Roteirista

Tom: F
Intro: D Dm Bb F Em Dm

Am Bb
Minha voz interior
Am Bb
foi pro fonoaudiólogo.
C F C F
E o roteirista que escreve a minha vida já tá sem papel
C F Bb Dm A
e paciência pra continuar

D F Bb C
Se tá ruim pra Deus, imagina pra mim

D F Bb C
Que sou de verdade, mas ninguém acredita.

Am Bb Am Bb
Já chegaram os resultados.
F Dm

Tinha seis, fiquei em oitavo Ando sem inspiração
F Dm C F
Então resolvi fazer esse samba pra você.

Am F Bb Dm A
E até nisso falhei.

D F Bb C
Se tá ruim pra Deus, imagina pra mim

Em F D F Bb C
Que sou de verdade, mas ninguém acredita.

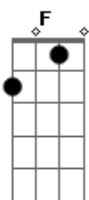
(Bb D A
Bb Ab A)

D F Bb C
Se tá ruim pra Deus, imagina pra mim

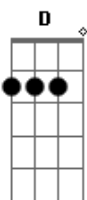
D F Bb C
Que sou de verdade, mas ninguém acredita.

(D F Gm Bb
D F Gm A)

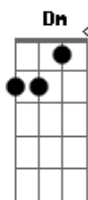
Acordes



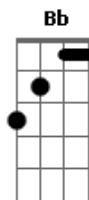
© ukulele-chords.com



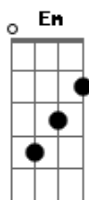
© ukulele-chords.com



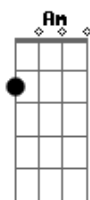
© ukulele-chords.com



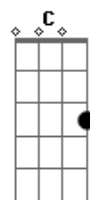
© ukulele-chords.com



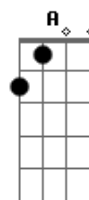
© ukulele-chords.com



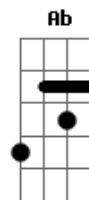
© ukulele-chords.com



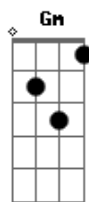
© ukulele-chords.com



© ukulele-chords.com



© ukulele-chords.com



© ukulele-chords.com