

Travis - Closer

Tom: F

(intro) F Am Dm Bb

F Am
I've had enough, of this parade
Dm Bb
I'm thinking of, the words to say
F Am
We open up, unfinished parts
Dm Bb
Broken up, its so mellow

C Dm
And when I see you then I know it will be next to me
C Dm
And when I need you then I know you will be there with me
C
I'll never leave you

(refrão)

F Am
Just need to get closer, closer
Dm
Lean on me now
Bb
Lean on me now
F Am
Closer, closer
Dm
Lean on me now
Bb
Lean on me now,

F Am
Keep waking up, without you here
Dm Bb
Another day, another year
F Am
I seek the truth, we set apart
Dm Bb
Thinking of a second chance

C Dm
And when I see you then I know it will be next to me
C Dm
And when I need you then I know you will be there with me
C
I'll never leave you

(refrão)

F Am
Just need to get closer, closer
Dm
Lean on me now
Bb
Lean on me now
F Am
Closer, closer
Dm
Lean on me now
Bb Dm
Lean on me now,
F
Lean on me now

(F Am Dm Bb)

C Dm
And when I see you then I know it will be next to me
C Dm
And when I need you then I know you will be there with me
C
I'll never leave you

Just need to get...

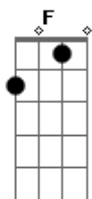
(refrão)

F Am
Just need to get closer, closer
Dm
Lean on me now
Bb
Lean on me now
F Am
Closer, closer
Dm
Lean on me now
Bb
Lean on me now,
F
Lean on me now

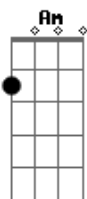
(F Am Dm Bb)

Closer, closer
Closer, closer

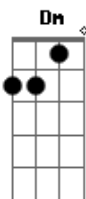
Acordes



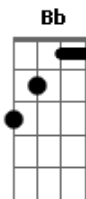
© ukulele-chords.com



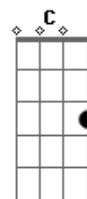
© ukulele-chords.com



© ukulele-chords.com



© ukulele-chords.com



© ukulele-chords.com