

We The Kings - Where I Belong (feat. Simple Plan & State Champs)

tom: G

Intro: E

[Primeira Parte]

E
I'm looking in the rearview mirror

Everything looks the same

A
There's nothing but broken streetlights

Gb A E
And I'm just trying to escape

I'm waiting on a distant feeling

I'm waiting for things to chance

A
It's getting hard to ride on empty

Gb A B
But maybe I'm not so far away

A
'Cause it feels like home

[Refrão]

E
I found a reason

A
And suddenly I'm not so alone

I'm finally breathing

B Db
Like I never could on my own

B
Start the countdown, let's get it on

A
Scream our lungs out to our favorite song

B E
'Cause this is where I belong

This is where I belong

(E)

[Segunda Parte]

E
I can tell you just don't get it

And that you'll never understand

A
I'm sorry that I can't be perfect

Gb A E
But I'm not changing who I am

Maybe there's no destination

Maybe I'm gonna make mistakes

A
Let you in on one of my secrets

Gb A B
I'm still just as lost as yesterday

A
But it feels like home

[Refrão]

E
I found a reason

A
And suddenly I'm not so alone

I'm finally breathing

B Db
Like I never could on my own

B
Start the countdown, let's get it on

A
Scream our lungs out to our favorite song

B E
'Cause this is where I belong

This is where I belong

[Ponte]

Db
Look past the warning signs

A
The same ones that told me

B
"Yeah, you can't turn back and run

A
Play it safe before you come undone"

Db
If you saw through my eyes

A
This view is worth it

B
Can't believe me when I say

There's no place in this world I'd rather be

[Refrão]

E
I found a reason

A
And suddenly I'm not so alone

I'm finally breathing

B Db
Like I never could on my own

B
Start the countdown, let's get it on

A
Scream our lungs out to our favorite song

B E
'Cause this is where I belong

This is where I belong

E
I found a reason (I found a reason)

A
And suddenly I'm not so alone

I'm finally breathing (I'm finally breathing)

B Db
Like I never could on my own

B
Start the countdown, let's get it on

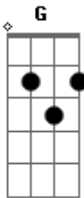
A
Scream our lungs out to our favorite song (favorite song)

B E
'Cause this is where I belong

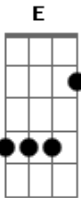
(E)

E
'Cause this is where I belong

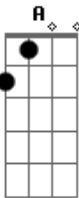
Acordes



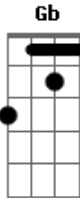
© ukulele-chords.com



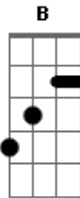
© ukulele-chords.com



© ukulele-chords.com



© ukulele-chords.com



© ukulele-chords.com



© ukulele-chords.com