

White Lion - You're All I Need

tom:

Intro: ^D ^G
^D ^G
^D ^G ^A ^D

^D ^G
I know that she's waiting
^{Em} ^A
For me to say forever
^D ^G
I know that I sometimes
^{Em} ^A
Just don't know how to tell her
^D ^G
I want to hold and kiss her
^{Em} ^A ^G ^D
Give her my love, make her believe
^A ^G ^D
She doesn't know
^A ^G ^D ^G ^A
She doesn't know

^D ^D ^G
You're all I need beside me girl
^A ^D
You're all I need to turn my world
^D ^{Em}
You're all I want inside my heart
^A ^G
You're all I need when we're apart
You're all that I need yeah

^D ^G
^D ^G
^D ^G ^A ^D

^D ^G
I know that she's always
^{Em} ^A
There when I need her loving
^D ^G
I know that I never
^{Em} ^A
Told her how much I love her
^D ^G
I see her face before me
^{Em} ^A
I look in her eyes
^G ^D
Just wondering why
^A ^G ^D
She doesn't know

^A ^G ^D ^G
She doesn't know
^A
She doesn't know

^D ^D ^G
You're all I need beside me girl
^A ^D
You're all I need to turn my world
^D ^{Em}
You're all I want inside my heart
^A ^G ^A
You're all I need when we're apart

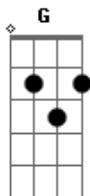
^{Bm} ^A ^G
Say say that you'll be there
^D ^{Em}
Whenever I reach out to
^D ^A
Feel your hand in mine
^D ^D ^G
Stay stay within my heart
^D ^{Em}
Whenever I'm alone I
^D ^A
Know that you are there
Ooooooh

(^G ^A ^D ^A ^{Bm} ^A)
(^G ^A ^{Gb} ^{Bm} ^G ^A)

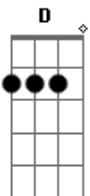
^D ^D ^G
You're all I need beside me girl
^A ^D
You're all I need to turn my world
^D ^{Em}
You're all I want inside my heart
^A
You're all I need when we're apart
^D ^D ^G
You're all I need beside me girl
^A ^D
You're all I need to turn my world
^D ^{Em}
You're all I want inside my heart
^A ^G ^A
You're all I need when we're apart

^D ^{Am}
All that I need is
^G ^{Gm}
For you to believe
^D ^A ^D
All that I need is YOU

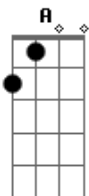
Acordes



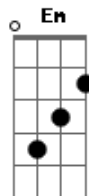
© ukulele-chords.com



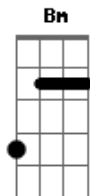
© ukulele-chords.com



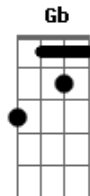
© ukulele-chords.com



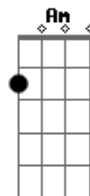
© ukulele-chords.com



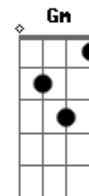
© ukulele-chords.com



© ukulele-chords.com



© ukulele-chords.com



© ukulele-chords.com