

WooSung - Phase Me

tom:

Intro: **Dm** **F**

Dm
It don't phase me

Bb
The thought of you out getting wasted

F
Calling somebody else baby

Am
I don't need your love anymore, hmm

Dm
Why you chase me?

Bb
Now that I'm over you lately

F
And I wouldn't mind if you erased me

Am
I don't need your love anymore

Bb
Used to breathe you, see you in my dreams

Dm
Now I wake up, you don't cut as deep

F **Am**
You can try and cry and kick and scream

Dm **Bb**
It just don't phase me at all

F
It just don't phase me at all

Am **Dm** **Bb**
It just don't phase me at all

F
It just don't phase me at all

Am
All, all, all-oh-woah

Dm
Do you miss it?

Bb
I was all in and committed

F
Thought you would change but you didn't

Am
And it doesn't hurt like before, uh, hmm

Bb
Used to breathe you, see you in my dr?ams

Dm
Now I wake up, you don't cut as deep

F **Am**
You can try and cry and kick and scream

Dm **Bb**
It just don't phase me at all

F
It just don't phase me at all

Am **Dm** **Bb**
It just don't phase me at all

F
It just don't phase me at all

All, all, all-oh woah

C **Dm** **Bb**
It just don't phase me at all

F
It just don't phase me at all

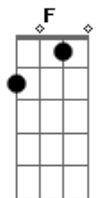
Am **Dm** **Bb**
It just don't phase me at all

F
It just don't phase me at all

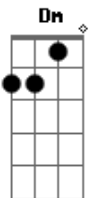
All, all, all-oh-woah

Am
It just don't phase me at all

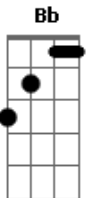
Acordes



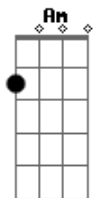
© ukulele-chords.com



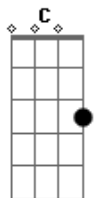
© ukulele-chords.com



© ukulele-chords.com



© ukulele-chords.com



© ukulele-chords.com